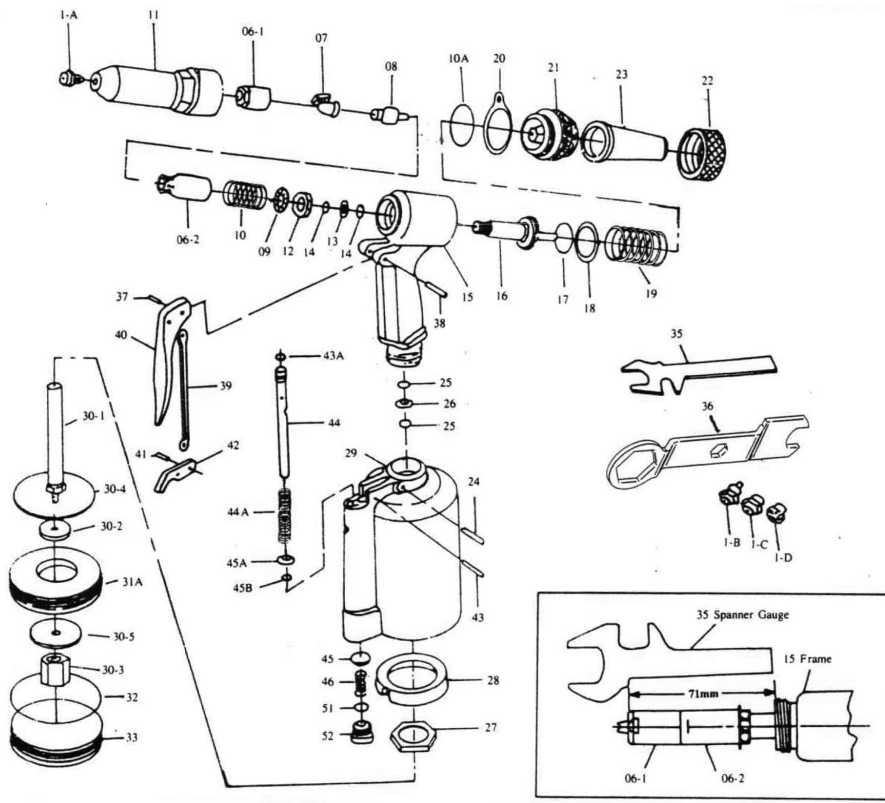


## APT690 - Riveter



Ref	PCL Part No	Description	Qty
1A	APS690/01-1	Nosepiece (3/16" / 4.8 mm)	1
1B	APS690/01-2	Nosepiece (5/32" / 4 mm)	1
1C	APS690/01-3	Nosepiece (1/8" / 3.2 mm)	1
1D	APS690/01-4	Nosepiece (3/32" / 2.4 mm)	1
06-1	APS690/06-1	Jaw case front tart (3/32", 1/8", 5/32")	1
06-2	APS690/06-2	Jaw case end tart	1
07	APS690/07	Jaw	2
08	APS690/08	Jaw pusher	1
09	APS690/09	Case washer ring	1
10	APS690/10	Jaw pusher spring	1
10A	APS690/10A	Frame cap o-ring 27 x 2	1
11	APS690/FHD	Frame head	1
12	APS690/12	Case lock nut	1
13	APS690/13	Back up ring	1
14	APS690/14	Back up o-ring P12	2
15	APS690/15	Frame	1
16	APS690/16	Oil piston	1
17	APS690/17	Oil piston o-ring P22A	1
18	APS690/18	Back up ring	1
19	APS690/19	Return spring	1
20	APS690/20	Hanging clip	1
21	APS690/21	Frame cap	1
22	APS690/22	Frame cap nut	1
23	APS690/23	Safety cap	1
24	APS690/24	Setting screw pin	1
25	APS690/25	Back up o-ring 12	2
26	APS690/26	Back up ring	1
27	APS690/27	Frame lock nut	1

Ref	PCL Part No	Description	Qty
28	APS690/28	Rubber cushion	1
29	APS690/29	Air cylinder	1
30-1	APS690/30-1	Air piston stem	1
30-2	APS690/30-2	Air piston al	1
30-3	APS690/30-3	Air piston lock nut	1
30-4	APS690/30-4	Big iron plate	1
30-5	APS690/30-5	Small iron plate	1
31A	APS690/31A	Air piston ring	1
32	APS690/32	Cylinder o-ring 67.94x6.62	1
33	APS690/33	Cylinder cap	1
35	APS690/35	Spanner gauge	1
36	APS690/36	Spanner	1
37	APS690/37	Trigger pin	1
38	APS690/38	Connector	1
39	APS690/39	Trigger rod	1
40	APS690/40	Trigger	1
41	APS690/41	Connector	1
42	APS690/42	Trigger lever	1
43	APS690/43	Lever pin	1
43A	APS690/43A	Valve pusher o-ring p7	1
44	APS690/44	Valve pusher	1
44A	APS690/44A	Valve spring	1
45	APS690/45	Valve	1
45A	APS690/45A	Valve collar	1
45B	APS690/45B	Collar o-ring P5	1
46	APS690/46	Valve spring	1
51	APS690/51	Valve cap o-ring P11	1
52	APS690/52	Valve cap	1